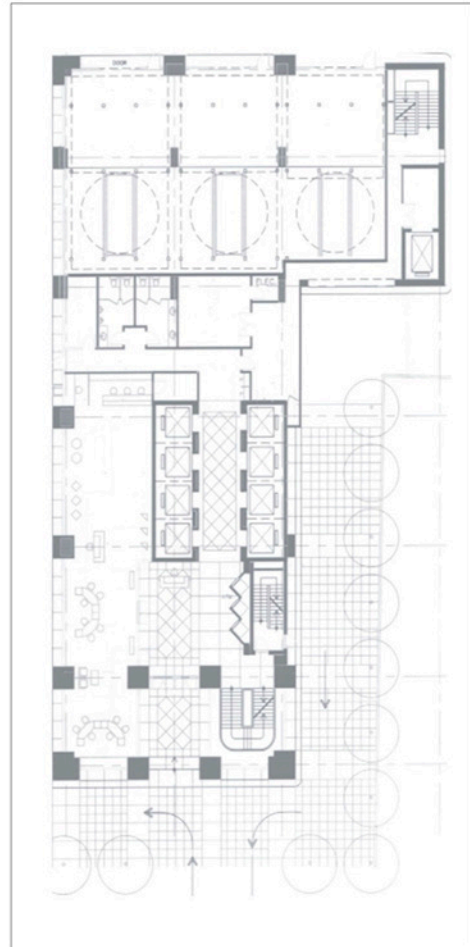




Located within the central business district of metropolitan Bangkok, the 34 storey, 34,000 sq.m. corporate headquarters building, of which the General Asia Bank occupies is a new landmark on the city skyline. The focal point of the glass tower is the Patina color spire at the top of the building which will be illuminated at night. The two storeys lobby provides access to four levels of the main banking hall. Most of the building's parking spaces will be fully automated.

...A new landmark on the city skyline.



ARCHITECTURE