

ARCHITECTURE

To support and maximize the level of service of the new airport to the full capability...

The Suvarnabhumi Airport Rail Link is a separated high speed electrified double track railway which will be built in parallel to the existing east line. The State Rail way of Thailand will undertake a separated high speed electrifies double track railway which will be built in parallel to the existing east line linking between inner Metropolitan and Suvernabhumi Airport (SA). The main component of the project compose of basic train operation and additional supporting service in three aspects:

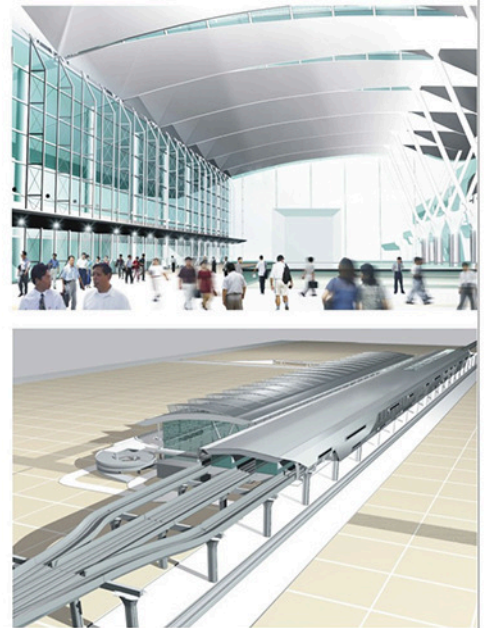
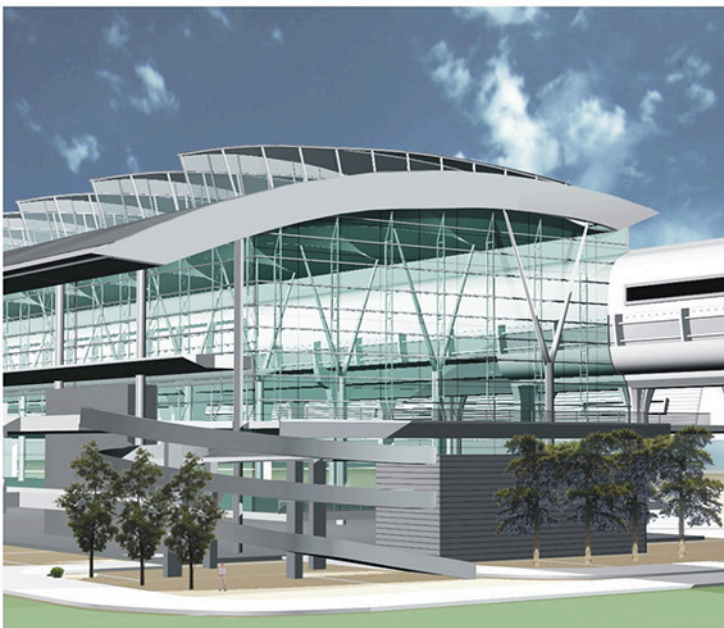
Suvarnabhumi Airport Express:
The train operates between Makkasan area, the beginning station which is the location of the City Air Terminal (CAT) building and the ending station at Suvarnabhumi Airport, the traveling time will be 15 minutes.

Suvarnabhumi Airport City Line:
The commuter train operates between Phaya Thai Station and Suvarnabhumi Airport. The SA City Link train service will also at other 6 Stations along the route and connected with BTS Phaya Thai Station. The traveling time will be 28 minutes.

City Air Terminal (CAT):
The additional services for air passengers to check-in ticket and luggage in town before traveling to the airport are the provision for all facilities and services of airlines information similar to services at the air passenger terminal complex in Suvarnabhumi Airport.



Makkasan/Asok Station



DESIGN CONCEPT CO., LTD.



Phaya Thai Station

Ratchaprarop Station



ARCHITECTURE



Hua Mak Station



DESIGN CONCEPT CO., LTD.



Ramkhamheang Station

Baan Thap Chang Station



ARCHITECTURE



Lat Krabang Station

Suvarnabhumi Station



DESIGN
CONCEPT

DESIGN CONCEPT CO., LTD.

ARCHITECTURE