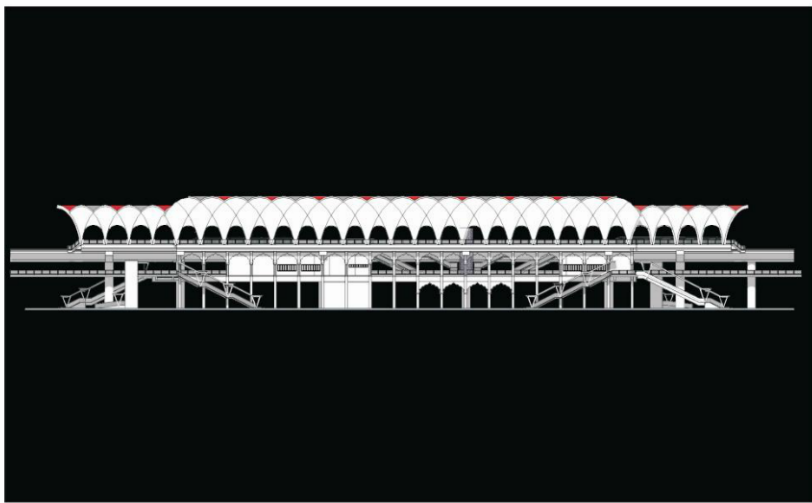


ARCHITECTURE

..."U" shaped deck carrying two tracks on a single pier located on the median of the road.



The three corridors spanning a length of approximately 71.16 km. to be taken up in phase-I are as under.

- Corridor I: Miyapur - LB Nagar: 29.87 km; 27 stations
- Corridor II: JBS - Falaknuma: 14.78 km; 16 stations
- Corridor III: Nagole - Shilparamam: 26.51 km; 23 stations

The proposed Metro rail system will be a completely elevated system, generally run in the central median of the road. The proposed viaduct structure for the elevated system is a "U" shaped deck carrying two tracks on a single pier located on the median of the road.

Stations will be designed as per the following categories:

- Category-I: 12 stations of 20m x 135m size (approximate)
- Category-II: 40 stations of 30m x 135m size (approximate)
- Category-III: 14 stations of more than 30m x 135m size (approximate)

DESIGN CONCEPT CO., LTD.